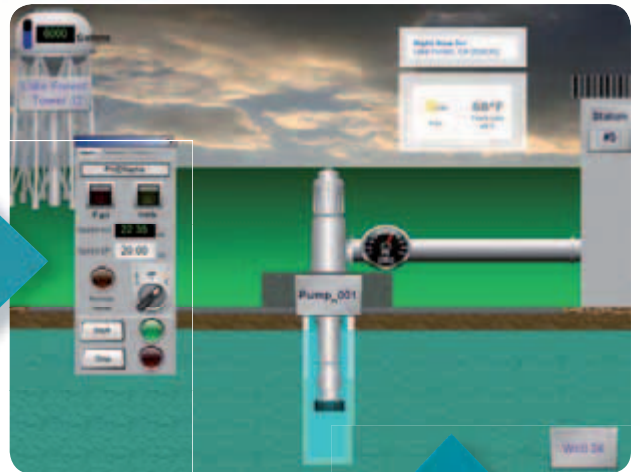
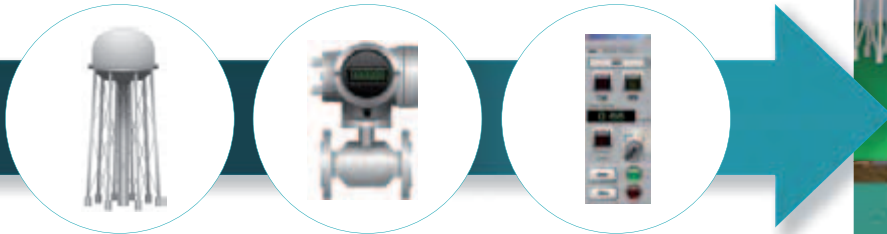


# Wonderware Industry Pack for Water & Wastewater



## Delivering Industry-Specific Solutions Through Advanced Software and Modular Components

The Wonderware Industry Pack for water and wastewater is a growing library of ArchedrA object templates, ArchedrA graphics, controls and report templates for use in the corresponding collection, transportation and distribution portion of water and wastewater SCADA applications.

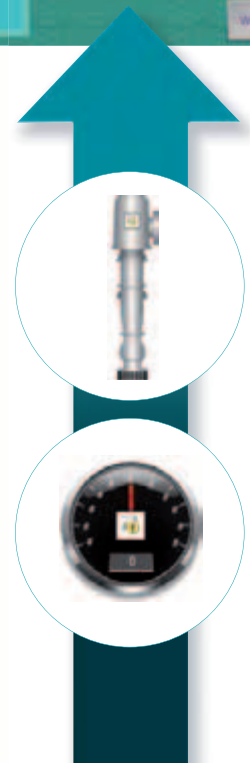
**The Industry Pack leverages the power of the Wonderware System Platform to assist System Integrators (SIs), Value Added Resellers (VARs) and End Users in the water and wastewater industry to:**

- Deliver projects faster to improve return on investment
- Easily adopt good development practices to improve application quality
- Achieve more efficient engineering for greater system functionality
- Assist in the adoption of operations standards to drive consistency

**ArchedrA object templates include the associated ArchedrA graphics which encompass ISA symbols, one or more physical representations and corresponding faceplates.**

**Templates included in the Industry Pack functionality represent:**

- Multiple types of stations — single or multiple pump stations, lift stations, boost stations and more
- Storage — ground-level, below-level and elevated
- Valves of the most popular types — ball, butterfly, needle and others
- Flow Meters with diverse physical elements
- Chemical Feed Systems
- Generators



Invensys.  
**Wonderware**

Software Solutions for Real-Time Success<sup>SM</sup>

# Contents from Wonderware Industry Pack

## Sample ArchestrA Object Templates and Graphics

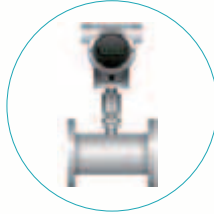
### Flow Meters



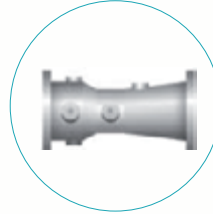
Flow Tube



Propeller

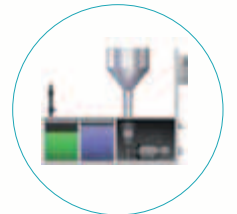


Turbine



Venturi

### Chemical Feeds



### Pumps



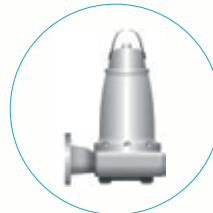
Centrifugal



Vertical



Feed

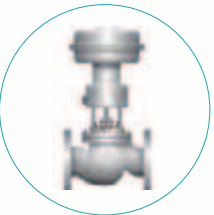


Submersible

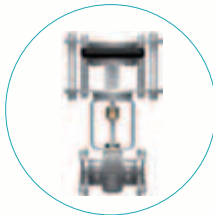
### Faceplates



### Valves



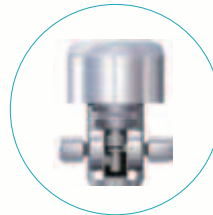
Globe



Pinch

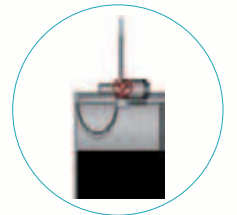


Relief



Needle

### Flow Gates



### Water Towers and Tanks



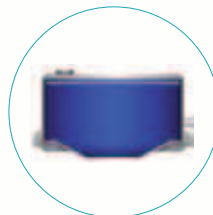
Fluted-column



Pedsphere



Multi-column



Below-level

### Generators



WW\_datasheet\_IndustryPack\_en\_1210

**Wonderware**  
Finland & Baltic

[www.wonderware.fi](http://www.wonderware.fi)

**Helsinki**  
tel. +358 9 540 4940  
[automation@klinkmann.fi](mailto:automation@klinkmann.fi)

**Yekaterinburg**  
tel. +7 343 376 5393  
[info@wonderware.ru](mailto:info@wonderware.ru)

**St. Petersburg**  
tel. +7 812 327 3752  
[info@wonderware.ru](mailto:info@wonderware.ru)

**Samara**  
tel. +7 846 273 95 85  
[info@wonderware.ru](mailto:info@wonderware.ru)

**Moscow**  
tel. +7 495 641 1616  
[info@wonderware.ru](mailto:info@wonderware.ru)

**Kiev**  
tel. +38 044 495 33 40  
[info@wonderware.com.ua](mailto:info@wonderware.com.ua)

**Riga**  
tel. +371 6738 1617  
[info@wonderware.lv](mailto:info@wonderware.lv)

**Vilnius**  
tel. +370 5 215 1646  
[info@wonderware.lt](mailto:info@wonderware.lt)

**Tallinn**  
tel. +372 668 4500  
[info@wonderware.ee](mailto:info@wonderware.ee)

**Minsk**  
tel. +375 17 200 0876  
[info@wonderware.by](mailto:info@wonderware.by)