

***“With Wonderware, if you want to do a simple thing, it’s easy to do it, but also it’s a very good product when what you want to do is much more complex.”***

***Ramon Gutiérrez, Automation Manager, Witte y Solá***

## Witte y Solá makes Plant Intelligence decisions by the use of Wonderware Software Solutions

*by Wonderware Spain - Logitek SA*



Sant Fost de Campsentelles, Barcelona, Spain - Witte y Solá, S.A. is a Spanish company founded in 1968 by a Spanish and German industrialists' group with the principal aim to develop great quality aluminum tubes-package.

In 1974 the Solá family assumes alone the company ownership and management. In 1983 the family starts an ambitious investment plan with the purpose of modernizing all the company technological structure and promotes its expansion into the international market. At 90's, the organization is restructured to direct it towards the customer specialized attention.

That process finish in 1996 with Company Register Certified at the UNE-EN-ISO 9002 standard awarding.

With a single production center and 150 workers staff, Witte y Solá provides to several domestic and international customers at Cosmetic, Pharmaceutical and Food industries with compressed high quality aluminum tubes-package.

### To replace a manual and proprietary system

In the past, Witte y Solá had had a production control IT system. This system was integrated by a network and proprietary software that ran under MS-DOS. The system had a lot of reliability and communication problems. Besides, being an obsolete technology, the data were not exportable and their mining was limited.

All these circumstances lead the company to the beginning of a plant data capture system change project about the middle of 2001. The system had to unite the PLC's network to join the data capture of existing product lines. This project began at the same time to the ERP system implantation did it for another company department.

#### Company Overview

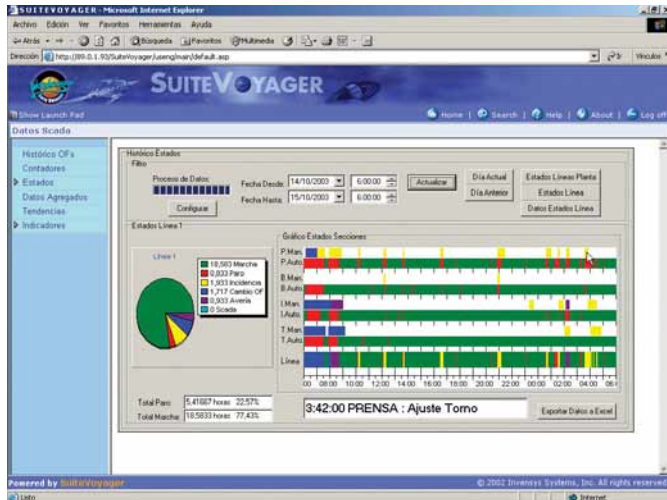
Witte y Solá, S.A. - Sant Fost de Campsentelles, Barcelona, Spain

Witte y Solá, S.A. is a Spanish company founded in 1968 by a Spanish and German industrialists' group with the principal aim to develop great quality aluminum tubes-package.

With a single production center and 150 workers staff, Witte y Solá provides to several domestic and international customers at Cosmetic, Pharmaceutical and Food industries with compressed high quality aluminum tubes-package.

**Metal Products**

**FactorySuite A<sup>2</sup>, SuiteVoyager**



Wonderware SuiteVoyager application

**Wonderware Solution's choice**

Wonderware FactorySuite A<sup>2</sup> was chosen because of its modular and scalable architecture and its good references. In the future, the company wants to do new functionalities implantations and this was an important aspect to consider during the control software choice. The plant management solutions should offer Manufacturing Execution System system functionalities.

Wonderware had such of advantages, according to Ramon Gutiérrez, Automation Manager: "With Wonderware, if you want to do a simple thing, it's easy to do it, but also it's a very good product when what you want to do is much more complex". Also he indicates: "At the same time, it's a very strong and reliable solution, because throughout period since the implantation conclusion, the system has never fallen". "Another interesting aspect of the solution is SuiteVoyager's capacity to work with others non Wonderware applications, so we've been able to inlay our IT solutions at the same time we used SuiteVoyager as unique portal for the totally plant management system".

**Quick project development**

One of the key features of the quick development and the absence of problems during the project was the software ease of use. Witte y Solá replaced the olds applications by the Wonderware technology implemented new ones imitating the old application traditional screens. That simplified the workers' learning process and made totally disappear any possible rejection to the new system. Both solutions only worked at the same time during a week. The queries arose throughout the application

development were quickly taken care of by telephone by the technical support department of the local Wonderware distributor, the company Logitek, S.A.

With the old system, workers write manually in a paper the machines shutdowns and the reason of its. That system was not much reliable and, also, was necessary made the report manually. By means of FactorySuite A<sup>2</sup> the factory manager has all the production information in real time.

A conclusion of the information visibility has been the changes in the manufacture orders produce higher-than-expected shutdowns. Before the system implantation, they thought the failures were a very important element that explained the shutdowns, however, after new software implantation discovered that reason represented 3% on the total cases only. The system has provided real capacity for based decision making.

At the present time, Witte y Solá is working in integration with SAP ERP solution dumping

The screenshot shows the 'Estado Planta Prensas' table in the SuiteVoyager application. The table lists production sections with columns for 'Sección', 'OF / Material', 'Veloc.', 'Previsto', 'Producidos', 'Estado Manual', 'Estado Auto.', and 'Tubos por Caja'. The data is organized into groups for sections 101-104, 201-204, 301-304, 401-404, 501-504, 105-108, 205-208, 305-308, 405-408, and 505-508. Each group shows production metrics and status for different materials and processes.

Sección	OF / Material	Veloc.	Previsto	Producidos	Estado Manual	Estado Auto.	Tubos por Caja
101 Prensa	6243	80	200000	136688	---	Marcha	
201 Borniz	2200150	0		131241	---	Marcha	
301 Impresion	6243	0		120422	---	Marcha	
401 Topar	6243	0	200000	126904	---	Marcha	
501 Acabados	2200150			113400	226 Cajas	Marcha	504
102 Prensa	6263	140	275760	137345	---	Marcha	
202 Borniz	2500552	140		135303	---	Marcha	
302 Impresion	6263	140		120814	---	Marcha	
402 Topar	6263	145	275760	123457	---	Marcha	
502 Acabados	2500552			113368	296 Cajas	Marcha	303
103 Prensa	6266	141	100000	51752	---	Marcha	
203 Borniz	2500393	80		50815	---	Marcha	
303 Impresion	6266	0		46768	---	Marcha	
403 Topar	6266	0	100000	43868	---	Pausa	
503 Acabados	2500393			35208	163 Cajas	Marcha	216
104 Prensa	6264	0	100000	55639	Otros Saco	Pausa	
204 Borniz	3000113	144		54804	---	Marcha	
304 Impresion	6264	130		50901	---	Marcha	
404 Topar	6264	143	100000	47224	---	Marcha	
504 Acabados	3000113			39560	172 Cajas	Marcha	230
105 Prensa	6291	0	50000	0	Cambio OF	Pausa	
205 Borniz	3000904	143		0	Cambio OF	Pausa	
305 Impresion	6240	140		0	Cambio OF	Marcha	
405 Topar	6240	140	200000	210698	---	Marcha	
505 Acabados	3000149			197340	858 Cajas	Marcha	230
106 Prensa	6254	135	25000	19605	---	Marcha	
206 Borniz	1980277	0		18603	---	Marcha	
306 Impresion	6254	0		16266	---	Marcha	
406 Topar	6254	0	25000	13677	---	Pausa	
506 Acabados	1980277			7120	10 Cajas	Marcha	396

Witte y Solá plant status

production information from FactorySuite A<sup>2</sup> and this one receiving as well the orders from ERP system. Another aspect where the company has been centered is in the data mining gotten with the system information.

The company considered a project that consisted of a progressive but a non-radical change whose result was not other that the improvement.