


Industry: Food & Beverage

## OSM Piatnica SM

www.piatnica.com.pl



**“Thanks to the information about equipment efficiency and utilization provided by the reporting system, we are able to understand how to improve our packaging line performance and increase our productivity”.**

Andrzej Jacak  
Automation Service Supervisor, OSM Piatnica

## Wonderware MES solution supports packaging process of cottage cheese

by Astor Sp.z o.o.

### Goals:

- To create a consistent reporting system for production efficiency;
- Real time monitoring of machine conditions;
- To analyze productivity levels through OEE monitoring;
- To analyze production potentials and material consumption.

### Challenges:

- To detect and eliminate the most frequent reasons of packaging machines stoppage;
- To improve the production management;
- To replace paper work with electronic records.

### Wonderware Solution:

- InTouch HMI;
- Wonderware Performance software;
- Wonderware System Platform.

### Results:

- 8% OEE increase thanks to the detection of weaknesses in the packaging process and later optimization;
- Quality and throughput increased;
- Production order tracking enabled the quantitative and qualitative control of packaged products;
- Available information for managers thanks to detailed reports.



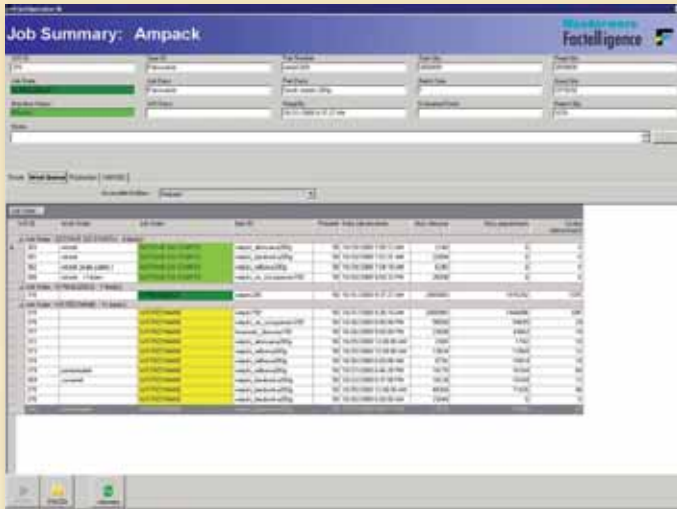


Figure 3: Work Order Summary at Operator Station.

The new solution is a user-friendly tool: reports can be created quickly and contains useful data on the most frequent downtimes, work status, maintenance and balancing of the resources.

*“Thanks to the information about equipment efficiency and utilization provided by the reporting system, we are able to understand how to improve our packaging line performance and increase our productivity. We knew it was possible, but we didn’t imagine that improvements would have been so easy to reach. Now we know that a production increase will not create bottlenecks,”* said

Andrzej Jacak, the Automation Service Supervisor in OSM Piatnica.

Wonderware Information Server’s reporting system ensures the web-based access to the reports, as well as to basic and current parameters connected with packaged products. It is also possible to conduct different analysis, based on the real data from anywhere, not only from the production plant.

It is worth to notice the easiness of application design and development thanks to the ArchestraA architecture and the simple management of production orders. Thanks to the Wonderware solution, OSM Piatnica was able to minimize the time needed to add new orders into the system.

By considering the results of the Wonderware solution implementation, OSM Piatnica management team is taking into consideration the possibility to use the same equipment and software automation for packaging lines which will be installed in the future. *“In the future we would like to add the reporting system to other machines and production lines, in order to analyze manufacturing process completely,”* summarizes Jacak.

---

*This document was realized thanks to the support of:  
OSM Piatnica.*