

New
Version
4.47

GSM-Control

SMS text message software for PC

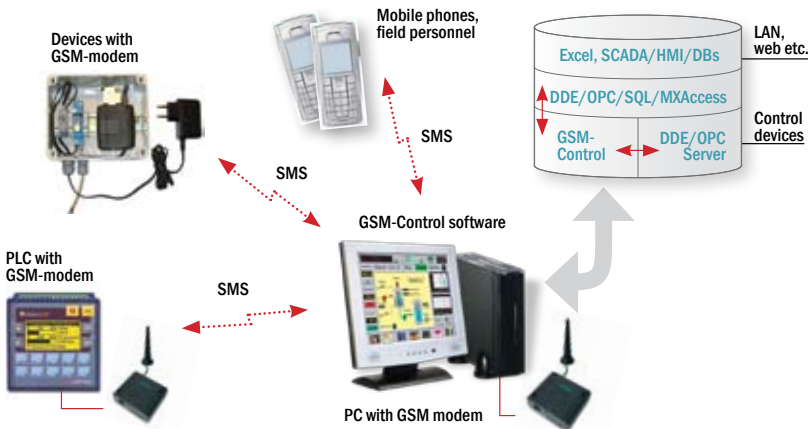
- Makes a PC as SMS text message server
- SMS sending/receiving with mobile phones and any devices with GSM/GPRS-modem
- New interface with Wonderware Application Server Galaxy database



Wonderware
Finland

GSM-Control SMS text message server is Microsoft Windows PC software used for 2-way remote control in automation and other applications using standard GSM/GPRS modems, cellular phones and GSM-network. Based on standard GSM-modems and other

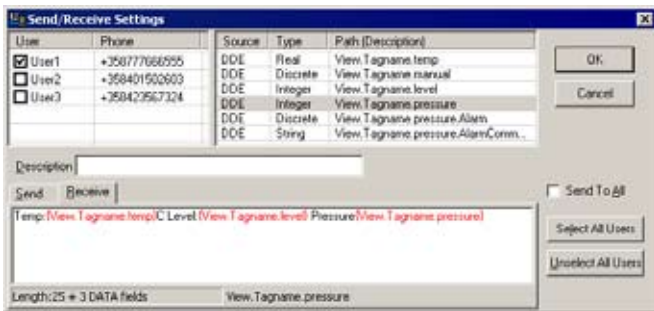
GSM-capable devices, GSM-Control offers a low-cost and easy alternative to create wireless control and monitoring applications. Implementation of SMS (text Message Service) technology secures reliable transmission even in the most error-sensitive applications.



The main task of GSM-Control is to work as a gateway between GSM environment at one side (interfacing with GSM environment by sending/receiving SMS text messages) and MS Windows environment (by using DDE (Dynamic Data Exchange), OPC (OLE for Process Control) or SQL (Structured Query Language) interfaces) or MX-Access (Wonderware proprietary interface to access of data in a Galaxy using native ArchestrA data types) at another side.

between GSM-modems is supported, i.e. remote GSM-modems can be used instead of GSM phone.

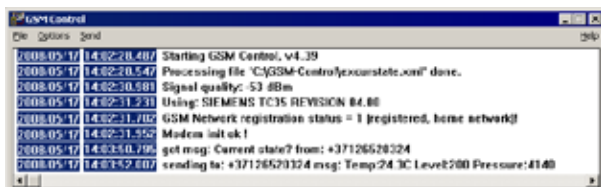
The GSM-Control software includes two MS Windows application programs: GSM-Control Configuration Program (GSMCFG) and GSM-Control Communication Program (GSMCTRL, further in the text also GSM-Control). The GSMCFG is used to prepare the source (configuration) information and GSMCTRL is used to perform the GSM SMS text mes-



GSM-Control Configuration Program allows quickly and easily link SMS messages with DDE, OPC and SQL items

The GSM-Control runs on a PC and accesses operator interface applications or directly field devices by using DDE, OPC or MXAccess interfaces. GSM-Control also supports the reading/writing of data from/to SQL databases. The remote control is based on GSM SMS text messages two-direction communication, where GSM-modem (e.g. Siemens MC351T) is connected to the computer's standard (RS-232) serial port and GSM cellular phone (remote GSM phone) is used by remote operator(s). Also the communication

sage communications and DDE/OPC/SQL/MXAccess data exchange on the basis on information prepared by GSMCFG. These two application programs are completely independent, i.e. each can work separately and doesn't need another program to be started. The data prepared by GSMCFG is saved in GSM-Control configuration file - XML (eXtensible Markup Language) format file used as an input file for GSMCTRL program. As many GSM-Control configuration files can be created as necessary.



GSM-Control reports all events and communication traffic as well as result of GSM-modem initialization

The easy and economical way to make your application wireless:

- makes a PC as 2-way communication center with GSM-modem using standard SMS text message service
- interfaces devices with GSM-modems, users with phones and existing PC applications together
- configures, transfers, reports, secures and interfaces the applications
- M2M automation, info systems, field personnel guidance, customer service etc.
- open interfaces to other PC applications: DDE, OPC, SQL, MXAccess
- new extended features incl. LMX protocol

Reference

Finn-Power metal working machines



- leading metal working machine manufacturer in Europe
- machines equipped with PCs, where GSM-Control SMS software installed
- machines send alarms and operation information via SMS locally and to service centre
- preventive maintenance, aftersales services/charges based on real use volumes

Reference

Woikoski gas distribution



- distribution of industrial and hospital gas tanks and gas bottles, monitoring of stations
- GSM-modem and SMS sw installed into stations' automation systems
- vehicle and service field personnel using phones as HMI
- fast responses, information to correct persons considering work shifts etc.

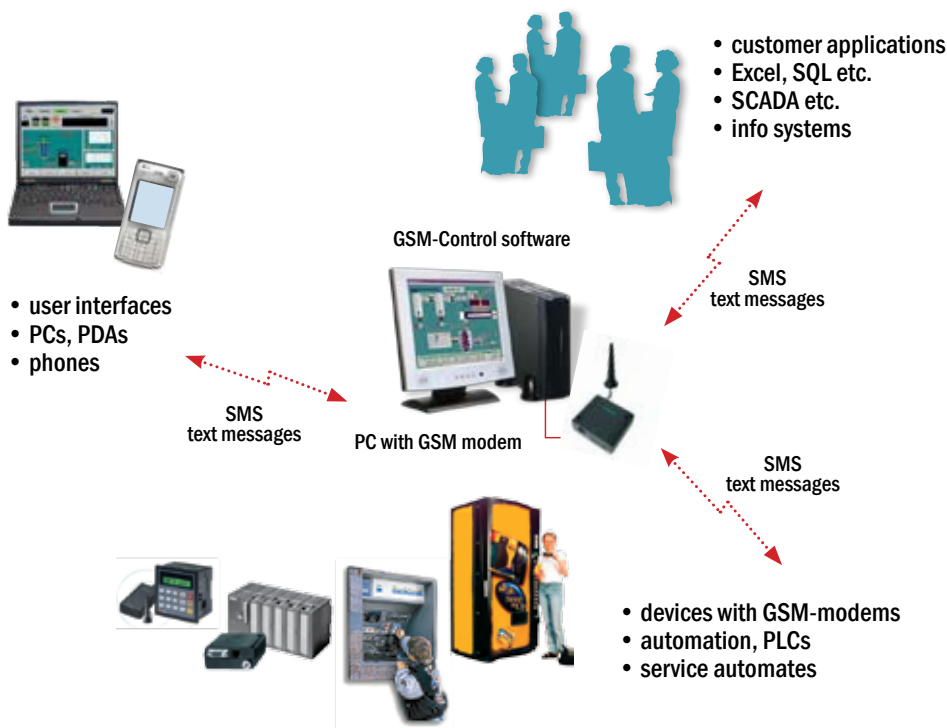
Basically, the data exchange through GSM-Control can be initiated both from GSM and MS Windows environments:

1. From GSM environment - by sending SMS message to GSM-Control, where the received message is checked and processed according the GSM-Control current configuration. The received SMS text message can contain some data to be transferred via DDE, OPC, SQL or MXAccess from GSM-Control to other MS Windows applications (e.g. to PC operator interface applications or field devices through appropriate communication servers) or databases. This SMS message received can have the corresponding response message configured (also possibly containing data values obtained by via DDE, OPC, SQL or MXAccess) – in this case GSM-Control will respond with SMS text message to the sender.
2. From MS Windows environment - when some alarm or event occurs in MS Windows application (e.g. in PC operator interface application or directly in the field device) and the corresponding alarm or event condition is specified in GSM-Control. In this case GSM-Control will send

the correspondingly configured SMS text message (possibly containing also some data obtained via DDE, OPC or SQL or MXAccess) to remote GSM operator or device linked to this alarm or event condition. The receiver of such SMS text message can respond to GSM-Control – for example, send some acknowledgment SMS message possibly containing some data for delivery via DDE, OPC, SQL or MXAccess.

Moreover, it is possible to send (manually or automatically through DDE, OPC or MXAccess) any pre-configured text message (“standard 1-way messages”) from GSM-Control to remote GSM operator or device. The SMS text messages also can be received from any (not configured) phone number (so called “ANYUSER” feature) and correspondingly replied with information depending on contents of received message.

The GSM-Control can be used on Internet - it is possible to send SMS text messages by e-mails from GSM-Control to GSM network and to receive SMS text messages as e-mails from GSM network. In this case GSM-Control may run without GSM-modem connected – modem is replaced by e-mail connection.



Reference

Otis wireless elevator maintenance



Otis uses the GSM-Control software, to deal with orders for spare parts automatically and wirelessly, directly between the service personnel's mobile phones and the computer in Finland.

Wireless service system minimizes response times and brings the service, on the service personnel's mobile phones.

Reference

ABB Energy Systems made wireless



ABB Energiesysteme manufactures cogeneration energy systems 100 kW - 20 MW driven by gas engines, gas turbines and fuel cells.

To allow operators and maintenance personnel to have wireless access via their mobile phones into the energy systems, ABB is using GSM-Control text message software.

The GSM-Control may be accessed by any Microsoft Windows (9x, NT, 2000, XP) program working as a DDE or OPC Server (or DDE or OPC Client in case of direct sending/receiving of SMS text messages via GSM-Control).

The GSM-Control has extended functions and support for Wonderware InTouch (for MMI), IAS (Industrial Application Server, via MXAccess) and for I/O Servers (for field interfacing) developed with Wonderware I/O Servers Development Toolkit.

Ordering information

GSM-Control SMS text message server
Software for PC,
3 phone/modem numbers, sw only
PR000673

GSM-Control SMS text message server
Software for PC,
unlimited, sw only
PR00067

Hardware Kit:
GSM/GPRS-modem,
antenna, power supply,
modem cable to interface
PC to GSM network
PC GSM SET

Other wireless software from Wonderware Finland & Baltics

GSM-Dial
conventional data connections with GSM-data

Reference

Car industry, GSM-Control and Wonderware



The GSM-Control software was added by Valmet Automotive to the Wonderware FactorySuite concept to allow wireless communication between Wonderware software and supervising persons' mobile phones.

The factory may now relay system alarms and information to its maintenance staff.

Reference

Wind power station, GSM-Control in energy production



Continuous running and preventive maintenance are of prime importance in energy production. The Kotka City Energy company is developing wind power applications as part of its energy production.

GSM-Control software and GSM-modems are used to automate the wind power stations.

KLINKMANN

www.klinkmann.com

Helsinki

tel. +358 9 540 4940
automation@klinkmann.fi

St. Petersburg

tel. +7 812 327 3752
klinkmann@klinkmann.spb.ru

Moscow

tel. +7 495 641 1616
moscow@klinkmann.spb.ru

Yekaterinburg

tel. +7 343 376 5393
yekaterinburg@klinkmann.spb.ru

Pyatigorsk

tel. +7 879 331 8441
pyatigorsk@klinkmann.spb.ru

Samara

tel. +7 846 342 6655
samara@klinkmann.spb.ru

Kiev

tel. +38 044 495 3340
klinkmann@klinkmann.kiev.ua

Riga

tel. +371 6738 1617
klinkmann@klinkmann.lv

Vilnius

tel. +370 5 215 1646
post@klinkmann.lt

Tallinn

tel. +372 668 4500
klinkmann.est@klinkmann.ee

Minsk

tel. +375 17 200 0876
minsk@klinkmann.com